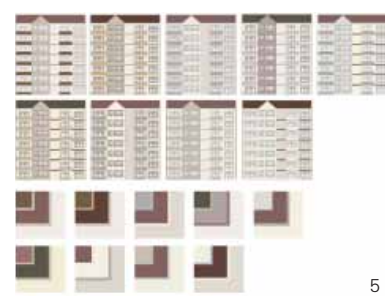
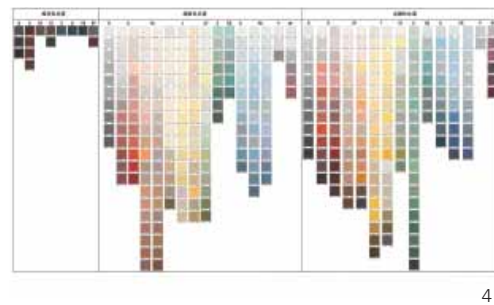
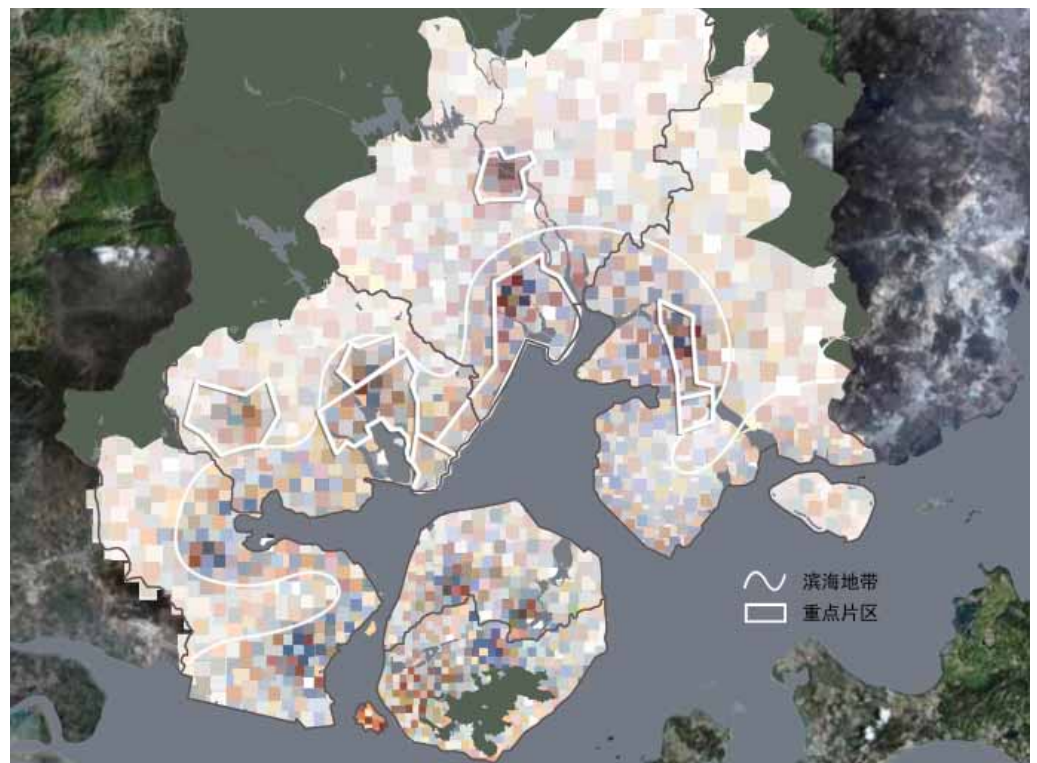


The Urban Color Planning of Xiamen 厦门城市色彩规划



针对厦门城市色彩环境特征，运用城市色彩规划理论与方法，提炼得出厦门城市色彩推荐色谱，总结其色彩特征为“大色淡渲、彩墨画意”，其中“大色”是借用闽南传统建筑在无檐瓦脊上常用的强烈装饰色的概念，表达厦门传统建筑的色彩偏好，“淡渲”则阐述了色彩艳度控制的原则，以及由此形成的具有闽南彩墨画韵的色彩氛围；该规划为厦门城市色彩提供分层面、分系统的规划策略；为城市色彩的总体空间分布提供了指引；该规划还针对厦门本岛、海湾地带与新区的城市空间发展态势，提供一般控制、重点控制和特殊控制区的推荐色谱，特别针对十个重点片区提供推荐色谱及其色彩规划导则。



	滨海地带	旧城及城南组团 (同安区)	环东海域起步区 (同安区 集美区)	新城及火炬工业园 (翔安区)	文教区 (翔安区)	机械工业集中区 (集美区)	新站片区 (集美区)	杏林湾文教区 (集美区)	旧城区 (集美区)
滨海地带	[Color swatch grid]	[Color swatch grid]	[Color swatch grid]	[Color swatch grid]	[Color swatch grid]	[Color swatch grid]	[Color swatch grid]	[Color swatch grid]	[Color swatch grid]
旧城及城南组团	[Color swatch grid]	[Color swatch grid]	[Color swatch grid]	[Color swatch grid]	[Color swatch grid]	[Color swatch grid]	[Color swatch grid]	[Color swatch grid]	[Color swatch grid]
环东海域起步区	[Color swatch grid]	[Color swatch grid]	[Color swatch grid]	[Color swatch grid]	[Color swatch grid]	[Color swatch grid]	[Color swatch grid]	[Color swatch grid]	[Color swatch grid]
新城及火炬工业园	[Color swatch grid]	[Color swatch grid]	[Color swatch grid]	[Color swatch grid]	[Color swatch grid]	[Color swatch grid]	[Color swatch grid]	[Color swatch grid]	[Color swatch grid]
文教区	[Color swatch grid]	[Color swatch grid]	[Color swatch grid]	[Color swatch grid]	[Color swatch grid]	[Color swatch grid]	[Color swatch grid]	[Color swatch grid]	[Color swatch grid]
机械工业集中区	[Color swatch grid]	[Color swatch grid]	[Color swatch grid]	[Color swatch grid]	[Color swatch grid]	[Color swatch grid]	[Color swatch grid]	[Color swatch grid]	[Color swatch grid]
新站片区	[Color swatch grid]	[Color swatch grid]	[Color swatch grid]	[Color swatch grid]	[Color swatch grid]	[Color swatch grid]	[Color swatch grid]	[Color swatch grid]	[Color swatch grid]
杏林湾文教区	[Color swatch grid]	[Color swatch grid]	[Color swatch grid]	[Color swatch grid]	[Color swatch grid]	[Color swatch grid]	[Color swatch grid]	[Color swatch grid]	[Color swatch grid]
旧城区	[Color swatch grid]	[Color swatch grid]	[Color swatch grid]	[Color swatch grid]	[Color swatch grid]	[Color swatch grid]	[Color swatch grid]	[Color swatch grid]	[Color swatch grid]

- 1 | 色彩印象之鼓浪屿
- 2 | 色彩印象之气象台
- 3 | 厦门色彩平面规划
- 4 | 厦门城市色彩推荐总谱
- 5 | 厦门城市色彩重点控制片区配色
- 6 | 海湾 + 重点片区推荐色谱